



# HD

DEWATERING PUMPS

50Hz

make future flow

# HD Series

## SUBMERSIBLE DEWATERING PUMPS

- **Reliable, Continuous Operation:**

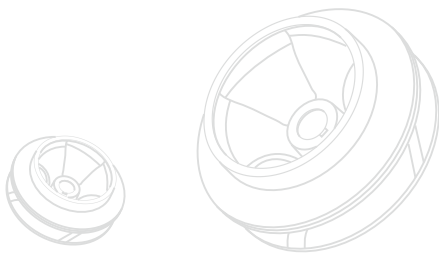
Equipped with a stainless steel SUS304 outer cover and water self-cooled motor, the HD series delivers exceptional corrosion resistance. A high-chrome alloy steel impeller (55-60 HRC) reduces wear, minimizes downtime, and significantly extends service life.

- **Superior Internal Protection:**

Pump internals are coated with high-solids epoxy, providing long-term protection against corrosion and oxidation.

- **Enhanced Durability (HD 15-20 HP models):**

These models feature an EPDM-covered mechanical seal bracket for improved abrasion resistance in harsh environments.



ADTC

## SPECIFICATIONS

Spec.	Description
Liquid Temp.	0~40°C (32~104°F)
Motor	2P (3000rpm) • Dry Motor
Insulation	Class F • Class H
Protection	IP68
Protector	Auto-cut
M.seal Type	Double M.seals
Impeller Type	Open • Close
Item	Material
Outer Cover	SUS304 / X5CrNi18-10
Upper Cover	FC200 / GG-20
Motor Frame	FC200 / GG-20
Shaft	SUS403 / X5Cr13 • SUS304 / X5CrNi18-10 • SUS420J2 / X30Cr13
M.seal	CA/CE & SiC/SiC
Casing	FC200 / GG-20 • FCD500 / GGG-50
Impeller	HiCrFC
Wear plate	HiCrFC (For Open)
Wear ring	HiCrFC (For Close)
Cable	VCT or H07RN-F

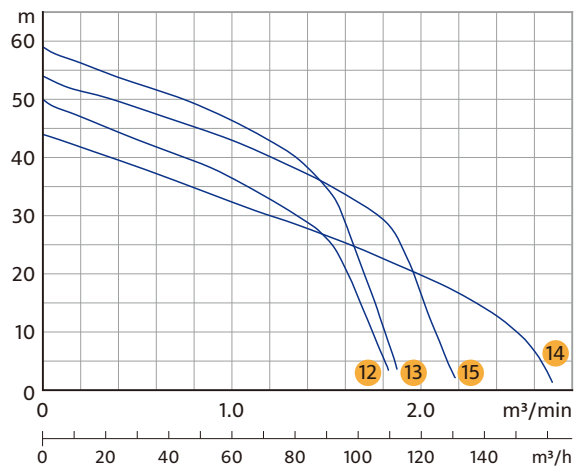
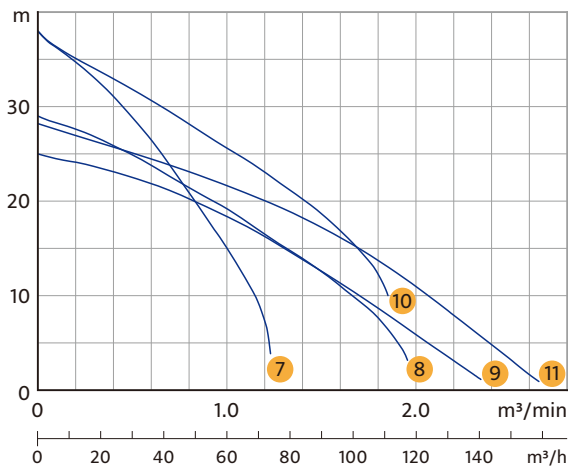
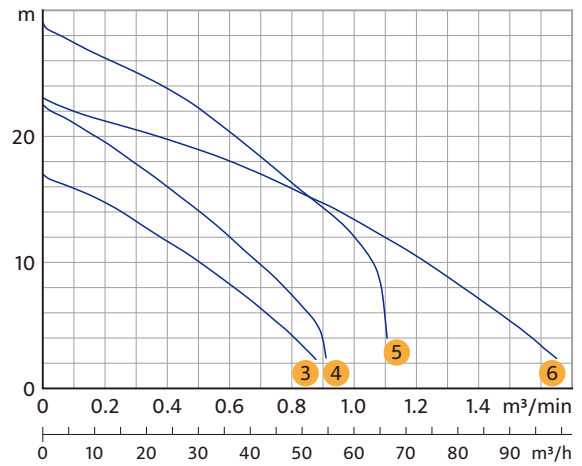
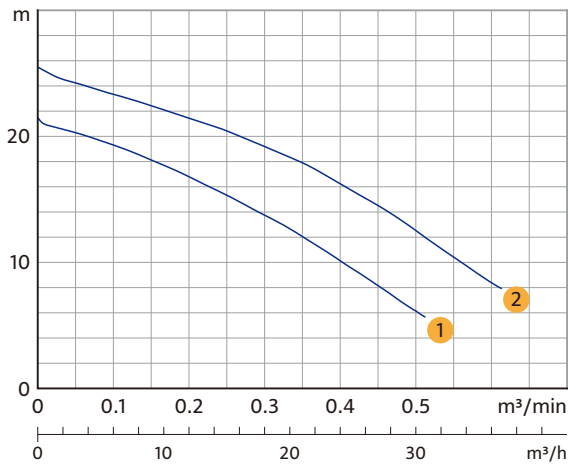
## PRODUCT NOMENCLATURE

$\frac{100}{\text{Discharge mm}}$ 
 $\frac{\text{HD}}{\text{Type}}$ 
 $\frac{2}{\text{Pole}}$ 
 $\frac{5.5}{\text{kW}}$

## APPLICATIONS

- Construction & foundation dewatering
- Tunneling & mining operations
- Industrial wastewater and process water removal
- Municipal, utility, and manhole drainage
- Portable use for contractors, installers, and industrial service teams

# PERFORMANCE CURVES AND SPECS



Model	Output HP(kW)	Discharge Inch(mm)	Phase Ø	Start Method	Standard	Max.	Solid Passage mm	Weight kg	
					m-m³/min			1Ø	3Ø
1 50HD21.5	2(1.5)	2" (50)	1	Capacitor	15-0.25	21.5-0.55	10	40	36
				DOL					
2 50HD22.2	3(2.2)	2" (50)	1	Capacitor	19-0.3	25.5-0.65	10	44	39
				DOL					
3 80HD21.5	2(1.5)	3" (80)	1	Capacitor	10-0.5	17-0.9	10	40	36
				DOL					
4 80HD22.2	3(2.2)	3" (80)	1	Capacitor	14-0.5	22.5-1.0	10	44	39
				DOL					
5 80HD23.7	5(3.7)	3" (80)	3	DOL	22-0.5	29-1.2	10	-	44
6 100HD23.7	5(3.7)	4" (100)	3	DOL	13-1.0	23-1.65	10	-	44
7 80HD25.5	7.5(5.5)	3" (80)	3	DOL	28-0.5	38-1.3	10	-	72
8 100HD25.5	7.5(5.5)	4" (100)	3	DOL	19-1.0	29-2.0	10	-	75
9 150HD25.5	7.5(5.5)	6" (150)	3	DOL	12-1.5	25-2.4	10	-	78
10 100HD27.5	10(7.5)	4" (100)	3	DOL	25.5-1.0	38-1.85	10	-	80
11 150HD27.5	10(7.5)	6" (150)	3	DOL	17-1.5	28-2.65	10	-	81
12 100HD211	15(11)	4" (100)	3	DOL	36-1.0	50-1.8	10	-	125
13 100HD215	20(15)	4" (100)	3	DOL	46-1.0	59-1.9	10	-	134
14 150HD211	15(11)	6" (150)	3	DOL	26.5-1.5	44-2.7	10	-	124
15 150HD215	20(15)	6" (150)	3	DOL	35-1.5	54-2.4	10	-	133

※ Excludes Cable & Outlet Weight.

# HDG Series

## SUBMERSIBLE SLURRY DEWATERING PUMPS

- **Corrosion-Resistant Continuous Operation:**

Built with a stainless steel SUS304 outer casing and water-cooled motor, paired with a high-chrome alloy steel impeller (55-60 HRC) for extended life and reduced maintenance.

- **Engineered for Slurry & Sediment Handling:**

Features a hardened ductile cast iron (FCD-700) agitator that delivers powerful stirring action to break down and suspend settled solids for efficient pumping.

- **Extended Wear Life:**

High-chrome impeller withstands abrasive applications, minimizing downtime and replacement cost.



Agitator



## SPECIFICATIONS

Spec.	Description
Liquid Temp.	0~40°C (32~104°F)
Motor	2P (3000rpm) • Dry Motor
Insulation	Class F • Class H
Protection	IP68
Protector	Auto-cut
M.seal Type	Double M.seals
Impeller Type	Open • Close
Item	Material
Outer Cover	SUS304 / X5CrNi18-10
Upper Cover	FC200 / GG-20
Motor Frame	FC200 / GG-20
Shaft	SUS403 / X5Cr13 • SUS304 / X5CrNi18-10
M.seal	CA/CE & SiC/SiC
Casing	FC200 / GG-20
Impeller	HiCrFC
Wear plate	HiCrFC (For Open)
Wear ring	HiCrFC (For Close)
Agitator	FCD700 / GGG-70
Cable	VCT or H07RN-F

## PRODUCT NOMENCLATURE

$\frac{80}{\text{Discharge mm}}$   $\frac{\text{HDG}}{\text{Type}}$   $\frac{2}{\text{Pole}}$   $\frac{1.5}{\text{kW}}$

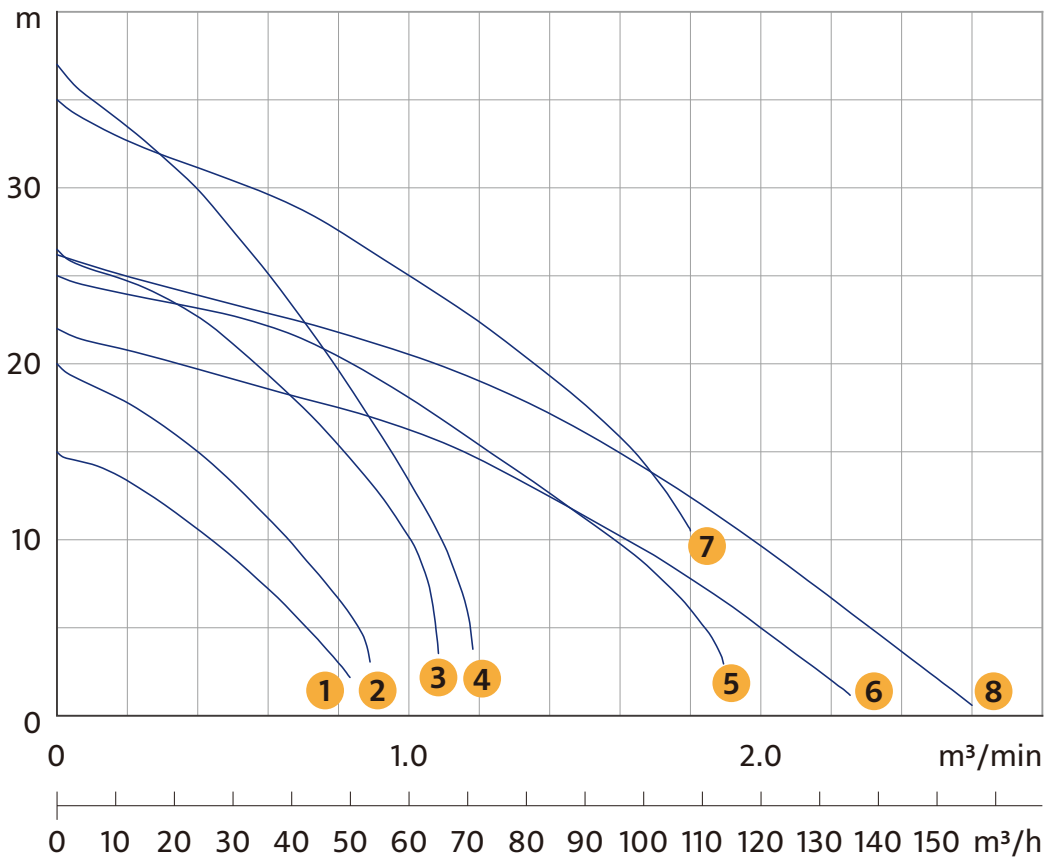


## APPLICATIONS

- Construction & foundation dewatering
- Tunneling & mining slurry handling
- Industrial wastewater and slurry removal
- Municipal and manhole drainage with sediment
- Portable operation for contractors and industrial field work



## PERFORMANCE CURVES AND SPECS



Model	Output HP(kW)	Discharge Inch(mm)	Phase Ø	Start Method	Standard	Max.	Solid Passage mm	Weight kg	
					m-m³/min			1Ø	3Ø
1 80HDG21.5	2(1.5)	3" (80)	1	Capacitor	9-0.5	15-0.9	10	41	36
			3	DOL					
2 80HDG22.2	3(2.2)	3" (80)	1	Capacitor	13-0.5	20-0.95	10	45	40
			3	DOL					
3 80HDG23.7	5(3.7)	3" (80)	3	DOL	21-0.5	26.5-1.2	10	-	45
4 80HDG25.5	7.5(5.5)	3" (80)	3	DOL	27-0.5	37-1.2	10	-	73
5 100HDG25.5	7.5(5.5)	4" (100)	3	DOL	18-1.0	25-1.9	10	-	76
6 150HDG25.5	7.5(5.5)	6" (150)	3	DOL	11-1.5	22-2.3	10	-	79
7 100HDG27.5	10(7.5)	4" (100)	3	DOL	24.5-1.0	35-1.8	10	-	81
8 150HDG27.5	10(7.5)	6" (150)	3	DOL	16-1.5	26-2.6	10	-	82

※ Excludes Cable & Outlet Weight.

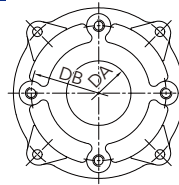




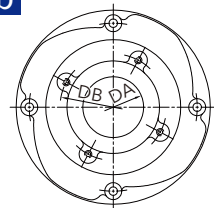
## ACCESSORIES : ADAPTER

ADTC (Adapter Connection) Pump model, can be applied with flange type adapter or check valve is an optional accessory for groundwater, deep well or wellpoint dewatering applications.

a



b



ADT

Adapter Connection (ADTC)

### Optional ADTC (adapter Connection) Casing

Figure	Model	mm		Bolt Size	Screw Number
		DA	DB		
a	80HD21.5/22.2/23.7	67	140	M12*25L	4
a	100HD23.7	80	150	M12*25L	4
a	100HD25.5/27.5	87	150	M12*25L	4
a	150HD25.5/27.5	97	175	M12*25L	4
b	100HD211/215	100	175	M12*30L	4
b	150HD211/215	100	175	M12*30L	4



# PRODUCT FEATURES



## 1 Epoxy Cable Base

An epoxy resin seal cable base prevents moisture from entering the motor through the core wires.



## 2 Auto-cut Protector

Automatic On / Off motor protector to prevent motor burn out due to high temperature and excess amperage draw.



## 3 High Efficiency Dry Motors

All stator coils are treated with insulating varnish procedures to achieve the best insulation, efficiency and durability.



## 4 Double Mechanical Seals

Superior abrasion resistant mechanical seal is manufactured with silicon carbide to ensure the best seal effect.



Close Impeller



Open Impeller



Professionalism · Innovation · Service · Commitment  
**HCP PUMP MANUFACTURER CO., LTD.**  
[www.hcppump.com](http://www.hcppump.com)



YouTube



Selection system



Catalog