



HD

DEWATERING PUMPS

60Hz

make future flow

HD Series

SUBMERSIBLE DEWATERING PUMPS

- **Reliable, Continuous Operation:**

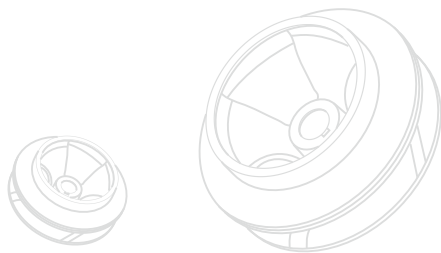
Equipped with a stainless steel SUS304 outer cover and water self-cooled motor, the HD series delivers exceptional corrosion resistance. A high-chrome alloy steel impeller (55-60 HRC) reduces wear, minimizes downtime, and significantly extends service life.

- **Superior Internal Protection:**

Pump internals are coated with high-solids epoxy, providing long-term protection against corrosion and oxidation.

- **Enhanced Durability (HD 15-20 HP models):**

These models feature an EPDM-covered mechanical seal bracket for improved abrasion resistance in harsh environments.



TAIWAN
EXCELLENCE 2021

SPECIFICATIONS

Spec.	Description
Liquid Temp.	0~40°C (32~104°F)
Motor	2P (3600rpm) • Dry Motor
Insulation	Class F • Class H
Protection	IP68
Protector	Auto-cut
M.seal Type	Double M.seals
Impeller Type	Open • Close

Item	Material
Outer Cover	SUS304 / AISI 304
Upper Cover	FC200 / ASTM-30
Motor Frame	FC200 / ASTM-30
Shaft	SUS403 / ASTM 403 • SUS304 / AISI 304 • SUS420J2 / ASTM 420 F
M.seal	CA/CE & SiC/SiC
Casing	FC200 / ASTM-30 • FCD500 / Gr.65-45-12
Impeller	HiCrFC
Wear plate	HiCrFC (For Open)
Wear ring	HiCrFC (For Close)
Cable	VCT or SJOW/SOW

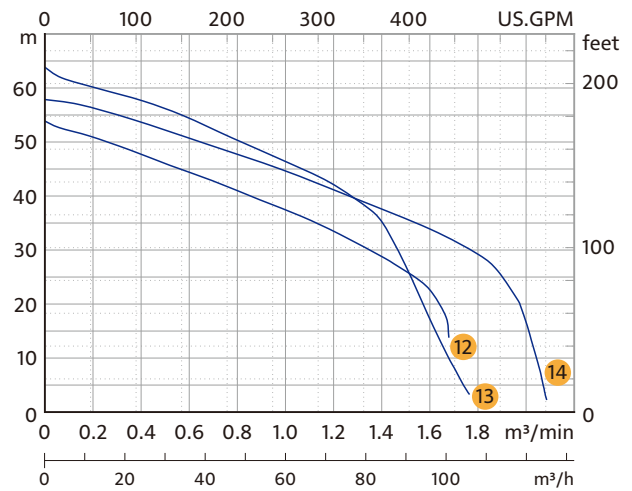
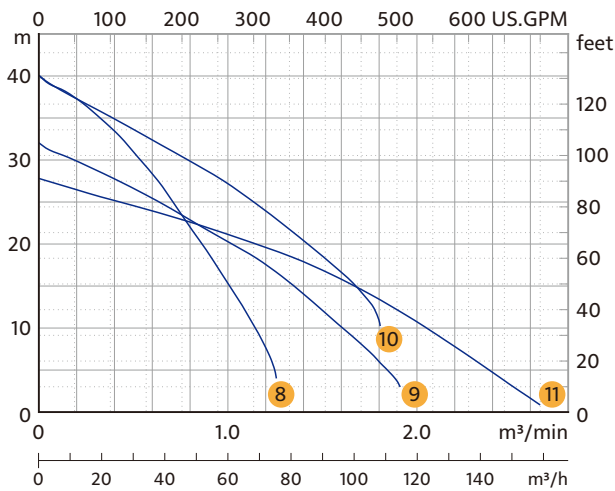
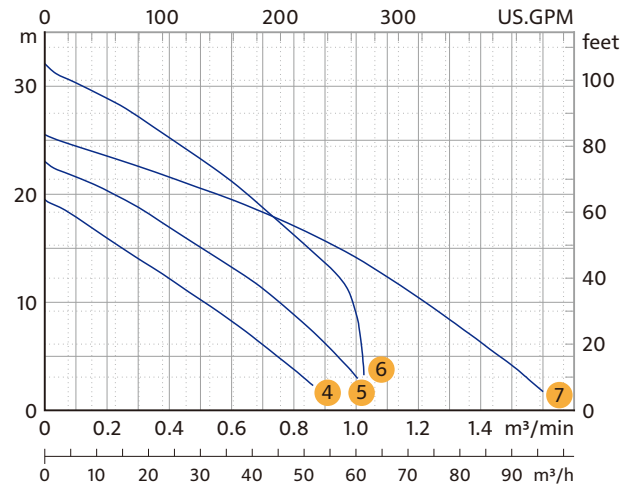
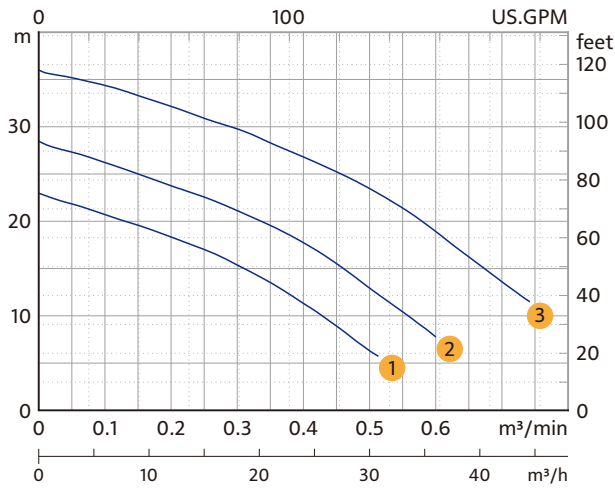
PRODUCT NOMENCLATURE

$\frac{100}{\text{Discharge mm}}$ $\frac{\text{HD}}{\text{Type}}$ $\frac{2}{\text{Pole}}$ $\frac{5.5}{\text{kW}}$

APPLICATIONS

- Construction & foundation dewatering
- Tunneling & mining operations
- Industrial wastewater and process water removal
- Municipal, utility, and manhole drainage
- Portable use for contractors, installers, and industrial service teams

PERFORMANCE CURVES AND SPECS



Model	Output HP(kW)	Discharge Inch(mm)	Phase Ø	Start Method	Standard	Max.	Solid Passage mm(inch)	Weight kg(lb)	
					ft-GPM	ft-GPM		1Ø	3Ø
1 50HD21.5	2(1.5)	2" (50)	1	Capacitor	54.1-66	75.5-145	10(3/8")	40(88)	36(79)
2 50HD22.2	3(2.2)	2" (50)	3	DOL	67.3-80	93.5-172	10(3/8")	44(97)	39(86)
3 50HD23.7	5(3.7)	2" (50)	3	Capacitor	96.8-80	118.1-212	10(3/8")	-	44(97)
4 80HD21.5	2(1.5)	3" (80)	1	DOL	32.8-132	64-238	10(3/8")	40(88)	36(79)
5 80HD22.2	3(2.2)	3" (80)	3	Capacitor	49.2-132	75.5-278	10(3/8")	44(97)	39(86)
6 80HD23.7	5(3.7)	3" (80)	3	DOL	73.8-132	105-290	10(3/8")	-	44(97)
7 100HD23.7	5(3.7)	4" (100)	3	Capacitor	42.7-264	82-420	10(3/8")	-	44(97)
8 80HD25.5	7.5(5.5)	3" (80)	3	DOL	98.4-132	131.2-345	10(3/8")	-	69(152)
9 100HD25.5	7.5(5.5)	4" (100)	3	Capacitor	65.6-264	105-530	10(3/8")	-	71(157)
10 100HD27.5	10(7.5)	4" (100)	3	DOL	85.3-264	131.2-475	10(3/8")	-	79(174)
11 150HD27.5	10(7.5)	6" (150)	3	Capacitor	55.8-395	91.9-700	10(3/8")	-	81(179)
12 100HD211	15(11)	4" (100)	3	DOL	121.4-264	177.2-450	10(3/8")	-	124(273)
13 100HD215	20(15)	4" (100)	3	Capacitor	150.9-264	210-475	10(3/8")	-	133(293)
14 150HD215	20(15)	6" (150)	3	DOL	114.8-395	190.3-605	10(3/8")	-	132(291)

※ Excludes Cable & Outlet Weight.

HDG Series

SUBMERSIBLE SLURRY DEWATERING PUMPS

- **Corrosion-Resistant Continuous Operation:**

Built with a stainless steel SUS304 outer casing and water-cooled motor, paired with a high-chrome alloy steel impeller (55-60 HRC) for extended life and reduced maintenance.

- **Engineered for Slurry & Sediment Handling:**

Features a hardened ductile cast iron (FCD-700) agitator that delivers powerful stirring action to break down and suspend settled solids for efficient pumping.

- **Extended Wear Life:**

High-chrome impeller withstands abrasive applications, minimizing downtime and replacement cost.



Agitator



SPECIFICATIONS

Spec.	Description
Liquid Temp.	0~40°C (32~104°F)
Motor	2P (3600rpm) • Dry Motor
Insulation	Class F • Class H
Protection	IP68
Protector	Auto-cut
M.seal Type	Double M.seals
Impeller Type	Open • Close
Item	Material
Outer Cover	SUS304 / AISI 304
Upper Cover	FC200 / ASTM-30
Motor Frame	FC200 / ASTM-30
Shaft	SUS403 / ASTM 403 • SUS304 / AISI 304
M.seal	CA/CE & SiC/SiC
Casing	FC200 / ASTM-30
Impeller	HiCrFC
Wear plate	HiCrFC (For Open)
Wear ring	HiCrFC (For Close)
Agitator	FCD700 / Gr.100-70-03
Cable	VCT or SJOW/SOW

PRODUCT NOMENCLATURE

$\frac{80}{\text{Discharge mm}}$ $\frac{\text{HDG}}{\text{Type}}$ $\frac{2}{\text{Pole}}$ $\frac{1.5}{\text{kW}}$

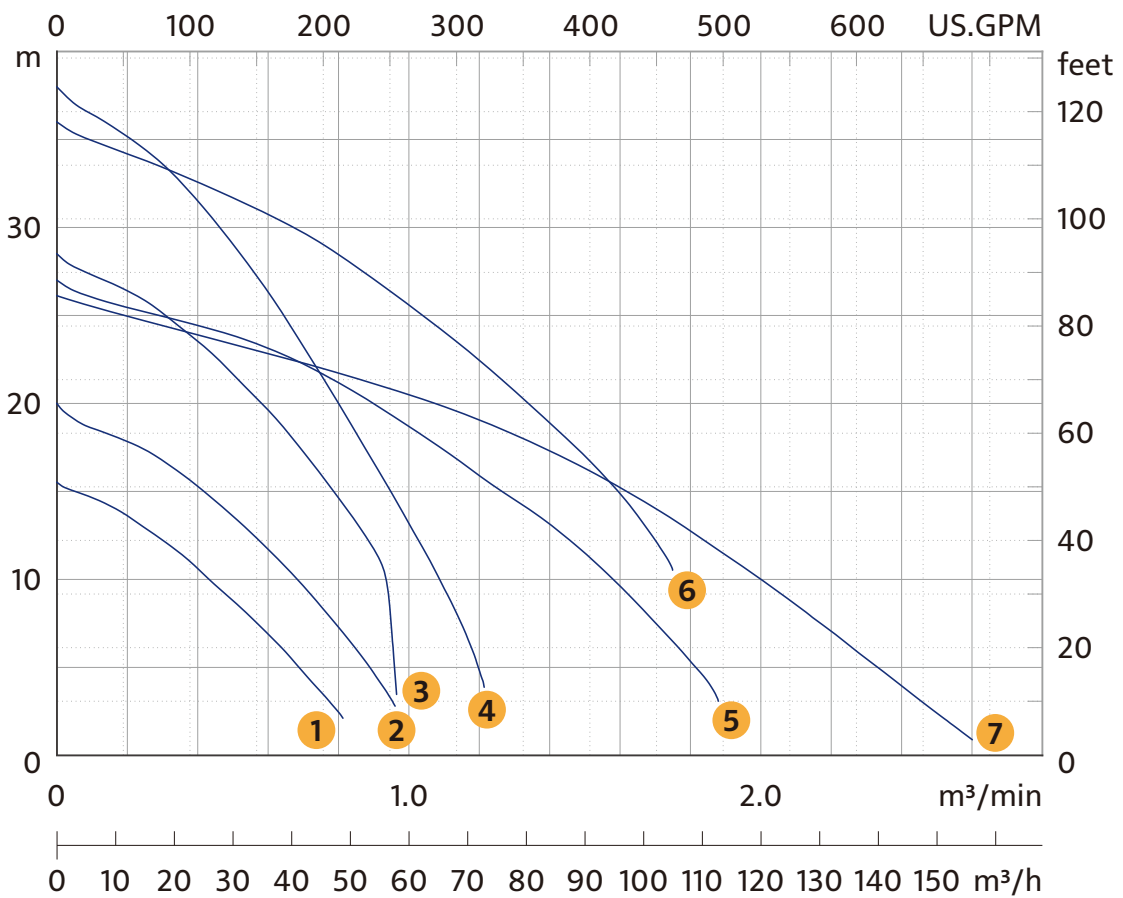


APPLICATIONS

- Construction & foundation dewatering
- Tunneling & mining slurry handling
- Industrial wastewater and slurry removal
- Municipal and manhole drainage with sediment
- Portable operation for contractors and industrial field work



PERFORMANCE CURVES AND SPECS



Model	Output HP(kW)	Discharge Inch(mm)	Phase Ø	Start Method	Standard	Max.	Solid Passage mm(inch)	Weight kg(lb)	
					ft-GPM	ft-GPM		1Ø	3Ø
1 80HDG21.5	2(1.5)	3" (80)	1	Capacitor DOL	26.2-132	50.9-225	10(3/8")	41(90)	36(79)
2 80HDG22.2	3(2.2)	3" (80)	3						
3 80HDG23.7	5(3.7)	3" (80)	1	Capacitor DOL	44.3-132	65.6-264	10(3/8")	45(99)	39(86)
4 80HDG25.5	7.5(5.5)	3" (80)	3						
5 100HDG25.5	7.5(5.5)	4" (100)	3	DOL	68.9-132	93.5-290	10(3/8")	-	45(99)
6 100HDG27.5	10(7.5)	4" (100)	3	DOL	95.1-132	124.7-315	10(3/8")	-	70(154)
7 150HDG27.5	10(7.5)	4" (100)	3	DOL	59.1-264	88.6-450	10(3/8")	-	72(159)
					82-264	118.1-460	10(3/8")	-	80(176)
					52.5-395	85.3-685	10(3/8")	-	82(181)

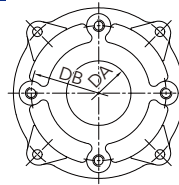
※ Excludes Cable & Outlet Weight.



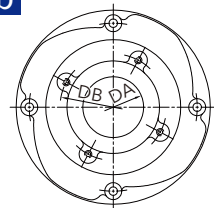
ACCESSORIES : ADAPTER

ADTC (Adapter Connection) Pump model, can be applied with flange type adapter or check valve is an optional accessory for groundwater, deep well or wellpoint dewatering applications.

a



b



Adapter Connection (ADTC)

Optional ADTC (adapter Connection) Casing

Figure	Model	mm		Bolt Size	Screw Number
		DA	DB		
a	80HD21.5/22.2/23.7	67	140	M12*25L	4
a	100HD23.7	80	150	M12*25L	4
a	100HD25.5/27.5	87	150	M12*25L	4
a	150HD27.5	97	175	M12*25L	4
b	100HD211/215	100	175	M12*30L	4
b	150HD215	100	175	M12*30L	4



PRODUCT FEATURES



1 Epoxy Cable Base

An epoxy resin seal cable base prevents moisture from entering the motor through the core wires.



2 Auto-cut Protector

Automatic On / Off motor protector to prevent motor burn out due to high temperature and excess amperage draw.



3 High Efficiency Dry Motors

All stator coils are treated with insulating varnish procedures to achieve the best insulation, efficiency and durability.



4 Double Mechanical Seals

Superior abrasion resistant mechanical seal is manufactured with silicon carbide to ensure the best seal effect.



Close Impeller



Open Impeller



Professionalism · Innovation · Service · Commitment
HCP PUMP MANUFACTURER CO., LTD.
www.hcppump.com



YouTube



Selection system



Catalog